



Cola[®]Teric LHS

Fatty Alkyl Sultaine Amphoteric

INCI NAME Lauryl Hydroxysultaine
CAS NUMBER 72869-77-3
LISTINGS TSCA; REACH (Pre-registered); IECSC; PICCS; NDSL

Cola[®]Teric LHS is a fatty alkyl amphoteric surfactant in the sultaine class. Cola[®]Teric LHS is a high foaming, biodegradable surfactant that is compatible with virtually all other surfactants. It demonstrates excellent stability in both extreme acid and alkaline formulations and very stable in both acid and alkali formulations and can be solubilized at 2-3% in 30-40% caustic soda solutions. Cola[®]Teric LHS is a unique foaming surfactant successfully used in sulfate-free and PEG-free formulations in industrial, household and hair & body care applications.

BENEFITS

- Offers mildness in combination with anionic surfactants and soaps
- Clear solutions with excellent foaming and wetting characteristics can be obtained.
- Combined effects of increased foam and stability with alkyl sulfates, alkyl ether sulfates, alkyl-benzene sulfonates and soaps
- Viscosity builder when formulated with anionic surfactants for liquid soaps and shampoos
- Outstanding performance in high concentrations of mineral acids
- Glycerin-Free
- **Greenest** of the sultaines offered

APPLICATIONS

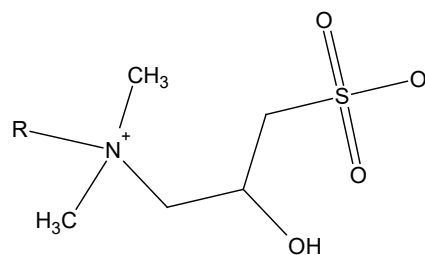
- Shampoos
- Liquid Soaps
- Acid Cleaners
- Metal cleaning
- Bottle washing concentrates
- Heavy duty steam cleaning
- Wax stripping
- Wetting agent in the acid pickling of metals and as a detergent in acid cleaners with scale and lime soap dispersing properties

Typical Use Level: 1 – 10%

TYPICAL PROPERTIES

| | |
|--------------------|--------------|
| Appearance | Clear Liquid |
| Ionic Character | Amphoteric |
| Solids, % | 49.0 – 51.0 |
| NaCl, % | 7.0 – 8.0 |
| pH (as is) | 6.5 – 8.5 |
| pH (5% aqueous) | 7.0 – 8.0 |
| Color, Gardner '98 | 3 Max. |

STRUCTURE

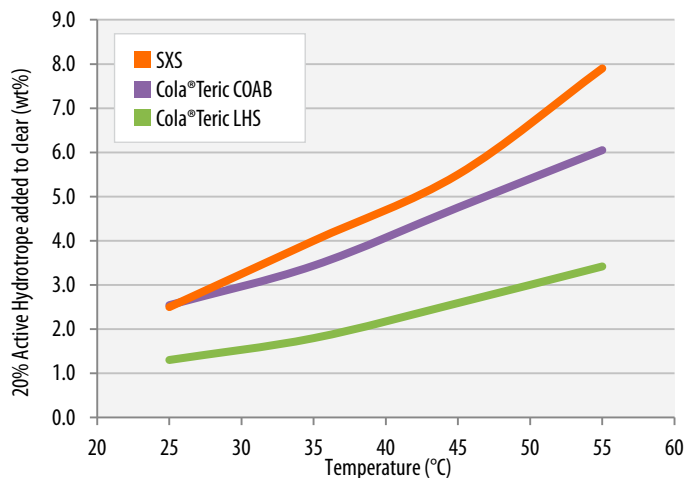


R - Lauryl

Readily Biodegradable (OECD 301D; 28 days)

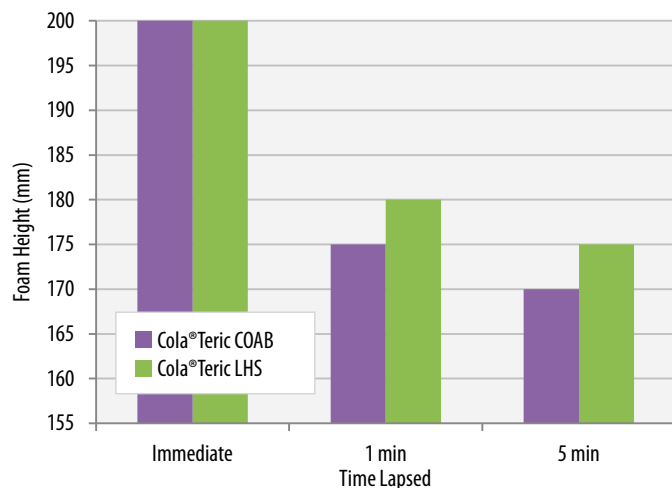
Cola[®]Teric LHS is rated as 87% biobased.

HYDROTROPE PERFORMANCE TEST



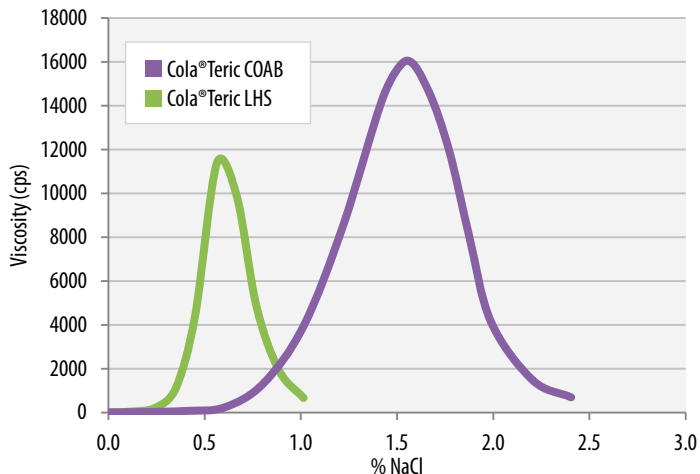
20% Active Cola®Teric Comparisons • Solution: 1% Surfonic L12-6 in 10% KOH

FOAM PERFORMANCE TEST



Test Solution: Water, SLS, SLES-2, Amphoteric
COAB: 75/10/10/5; LHS: 76.4/10/10/3.7

SALT PERFORMANCE TEST



Test Solution: Water, SLS, SLES-2, Amphoteric + Cola®Liquid DC (all) 1.5
COAB: 75/10/10/5; LHS: 74.9/10/10/3.7

FORMULATION 95% RCI Foaming Face Wash

| INGREDIENT | % |
|--------------------------------|--------------|
| 1 Water | qs to 100.00 |
| 2 Suga®Nate 160NC | 15.00 |
| 3 Cola®Teric LHS | 9.00 |
| 4 Poly Suga®Glycinate C | 3.00 |
| 5 Glycerine | 4.00 |
| 6 Cola®Trope CA | 1.00 |
| 6 Euxyl PE9010 | 0.70 |
| 7 White Lily Fragrance | 0.10 |

Procedure:

Combine ingredients 1-2. Heat to 45°C. Add remaining ingredients.

Typical Properties:

Appearance: Clear pH: 6.0 Viscosity: 20 cps

STORAGE / HANDLING

Cola®Teric LHS should be stored in closed containers. Frozen material may be thawed in a warm room, venting drums while warming. Shipped in 55 gallon poly drums (net weight 480 lb/217 kg). Typical shelf life is 12 months from date of manufacture. Safety Data Sheets may be found at www.colonialchem.com.

ADDITIONAL LISTINGS



CleanGredients
Whole Foods Premium Body Care
USDA Biopreferred Product



Colonial Chemical, Inc.

225 Colonial Drive • South Pittsburg, TN 37380
Phone: 423-837-8800 • Fax: 423-837-3888
www.colonialchem.com

Innovative Specialty Surfactants