



Cola[®]Teric CBS

Sultaine Amphoteric Co-Surfactant

INCI NAME Cocamidopropyl Hydroxysultaine
CAS NUMBER 68139-30-0
LISTINGS TSCA, REACH (Pre-Registered), DSL, AICS, PICCS, IECSC, NZIoC

Cola[®]Teric CBS is a sultaine amphoteric surfactant. Cola[®]Teric CBS exhibits outstanding surface activity, wetting, foaming, and compatibility in a wide variety of applications. Due to its amphoteric nature, Cola[®]Teric CBS is compatible with cationic, anionic, and nonionic surfactants. The compatibility and stability of formulations containing Cola[®]Teric CBS are maintained over a broad pH range.

In industrial applications, Cola[®]Teric CBS is compatible and stable in systems containing acids, alkali, electrolytes and detergent builders. Cola[®]Teric CBS has excellent lime soap dispersing properties. Cola[®]Teric CBS is a mild detergent that will help stabilize foam and build viscosity.

COLA[®]TERIC SULTAINES ARE "GREENER"

More natural raw materials are used in the manufacture of Cola[®]Teric cocamidopropyl hydroxysultaine than other leading brands. For formulators interested in making their product more eco-friendly, Cola[®]Teric sultaines offer greener and more sustainable characteristics.

Cola[®]Teric CBS is rated as 76% biobased.

BENEFITS

- High foaming amphoteric surfactant derived from coconut oil
- Preservative-free
- Mild on the skin and eyes
- High electrolyte tolerance
- Excellent foaming over broad pH ranges
- Greatly improves the foam quality of formulated systems
- Compatible with all surfactant classes

Cola[®]Teric CBS is Readily Biodegradable (OECD 301D; 28 days)

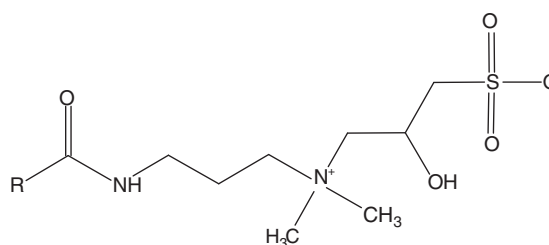
APPLICATIONS

- 2 in 1 Shampoos, Bar Soap, Bath Gels, Body Washes
- Facial Cleansers
- Ethnic Products
- Liquid Hand Soaps, Towelettes
- Metal Cleaners, Paint Strippers
- All-Purpose Heavy Duty Industrial Cleaner
- Foam Boosters
- Transportation Washes

Typical Use Level: 1 – 10%

TYPICAL PROPERTIES / STRUCTURE

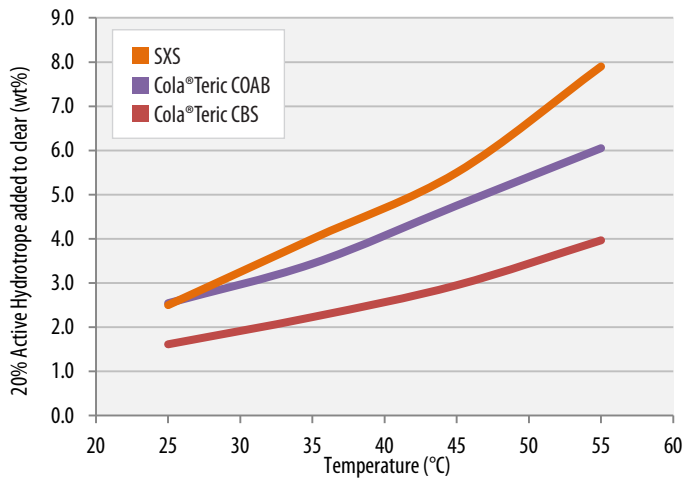
Appearance	Clear Yellow Liquid
Ionic Character	Amphoteric
Solids, %	48.0 – 50.0
NaCl, %	7
pH (10% as is in deionized water)	7.5 – 8.5
Color, Gardner '98	2
% Glycerin	2.6



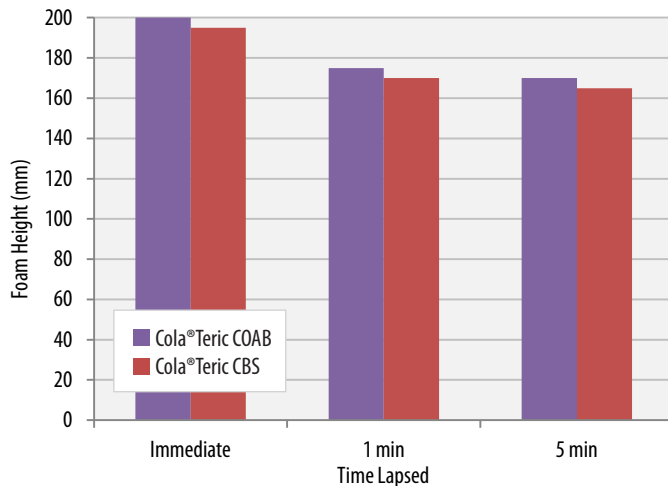
WETTING AND FOAM PERFORMANCE

Draves Wetting, 1% active, sec	25.4		
Ross-Miles	Immediate	1 min	5 min
1% active, tap water	190	175	170
1%, 2% NaCl water	195	175	165

HYDROTROPE PERFORMANCE TEST

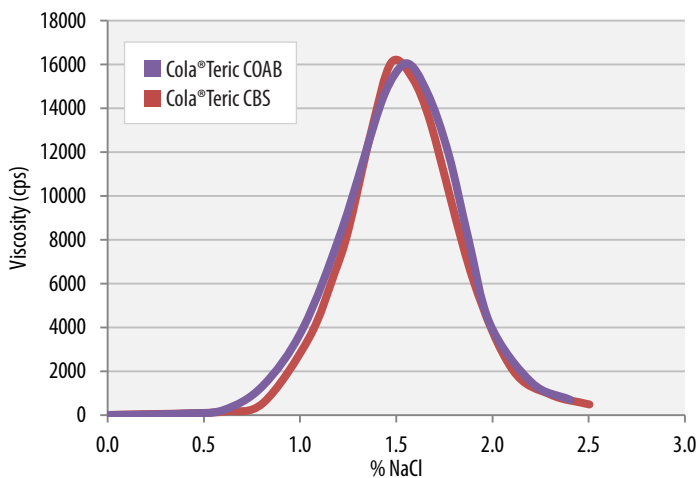


FOAM PERFORMANCE TEST



Test Solution: Water, SLS, SLES-2, Amphoteric
COAB: 75/10/10/5; CBS: 76.4/10/10/3.7

SALT PERFORMANCE TEST



Test Solution: Water, SLS, SLES-2, Amphoteric + Cola®Liquid DC (all) 1.5
COAB: 75/10/10/5; CBS: 76.4/10/10/3.7

FORMULATION *Foaming Facial Cream*

INGREDIENT	%
1 Water	qs to 100.00
2 Suga®Nate 160NC	30.00
3 Cola®Teric CBS	15.00
4 Cola®Lipid SAFL	1.50
5 Glycol Distearate	2.50
6 Cola®Mate SS-40	7.00
7 Pureact® MS	5.00
8 Fragrance (White Lily)	0.10
9 Kathon® CG	0.07

Procedure:

1. Combine ingredients 1-4. Heat to 65-70°C.
2. Add 5-7 and allow to melt completely. Once homogeneous, slowly cool below 50°C.
3. Add 8, 9. Adjust pH with citric acid as needed.

Typical Properties:

Appearance: Clear pH: 6.0 Viscosity: 12000 cps

STORAGE / HANDLING

Cola®Teric CBS should be stored in closed containers. Frozen material may be thawed in a warm room, venting drums while warming. Shipped in 55 gallon poly drums (net weight 480 lb/217 kg). Typical shelf life is 12 months from date of manufacture. Safety Data Sheets may be found at www.colonialchem.com.

ADDITIONAL LISTINGS



DfE (CleanGredients)

Whole Foods Premium Body Care

USDA Biopreferred Product



Colonial Chemical, Inc.

225 Colonial Drive • South Pittsburg, TN 37380
Phone: 423-837-8800 • Fax: 423-837-3888

www.colonialchem.com

Natural Surfactants